

(1)
C & C 30 MK II

Building the Wine Glass Holder

1. This package contains instructions and sketches plus scanned pictures.
2. Woodworking skills and equipment are essential to make the pieces and assemble the Holder. It is not for the novice.
3. Attaching the unit to a secure area is left to the builder.

Material

1. Teak plank --1/2" thick x 8" wide x 24" long.
2. # 6 SS screws x 1" and Epoxy Glue.

Equipment

1. Table saw with carbide blade (useful to cut the plank)
2. Drill press with drill bits for pilot holes and # 6 screws.
3. Combination drill bit and countersink for # 6 screws.
4. Plug cutter for #6 screws and a Countersink.
5. Router and curved cutter bits.
6. Drill Press sanding disks.
7. Wheel and Circle Cutter (for holes)
- 8 Assortment of clamps or equivalent.
9. 3/8" Power Drill & bits (to drive screws).
10. Jig Saw/blades, etc., etc..
11. Flat workbench with vise

Good luck, and take your time making the unit. You can e-mail me if you have a problem or need advice.

Ed Ludwik
94 O'Connor Crescent
Richmond Hill, Ontario, Canada L4C 7N8
(905) 737-2093
theludwiks@gta.igs.net

(2)

C & C 30 MK I -- Wine Glass Holder

Top & Bottom "Platforms"

(See Pages 4 and 5)

1. Cut 2 8" pieces from the 24" plank. Use a table saw to ensure proper 90 degree angles for all cuts.
2. Layout both the Top and Bottom platforms lines and screw and pilot holes. The grain should be perpendicular to the Top Platform stem openings (1/2").
3. Use a Jigsaw or equivalent and cut along the outside lines leaving at least 1/16" to 1/8" for sanding purposes.
4. Use the drill press and rotary sanding disk to clean the cut edge to the line.
5. Use the drill press and the wheel and circle cutter to cut out the large holes; 2 1/2" diameter cut for the Top Platform and 3" diameter cut for the Bottom Platform.
6. Repeat 4. above and lightly "clean" the inside of the rings.
7. Use a router with a curved cutter to create a rounded edge to the top and bottom of both the outside edges and the inside the 4 rings. The Bottom Platform is complete except for a light sanding of the flat surfaces.
8. The 4 rings on the Top Platform need further routing create a "cradle" for the base of the wine glass. The curved cutter has to be adjusted for 1/16" deep cut along the hatched inner lines of the platform (see top view, page 0). This will also round out this edge.
9. Next, carefully cut the 1/2" slots and round off the edges. The Top Platform is complete except for a light sanding of the flat surfaces, so do it now.
10. Cut a 4" piece from the plank . Measure out 5" along the 8" length and cut. Round off both edges along the 4" length with the router (See Bottom Platform layout). Measure out 1 3/4" along the 3" leftover and cut. Round off both edges on one side **ONLY!** Measure out 1 3/4" along the 8" length and cut. Trim to a 4" height and round off the edges on one side. You now have 3 pieces 4 " high; one 5 " wide and 2 x 1 3/4" wide. These now form the platform dividers. The 2 similar pieces can now be glued (epoxy) to the 5" piece as shown in the Bottom Platform Layout.

(3)

C & C 30 MK I -- Wine Glass Holder

Top & Bottom "Platforms"

(See Pages 4 and 5)

1. The Top Support, which is a piece 5 7/8" long x 2" high x 1" wide, can be assembled and glued from the teak leftovers. Note that only 2 screws hold the support to the Top Platform so it you can also be glued in place.

It should be noted that I used a 1/2" x 8" x 24" plank to make the pieces. This was the easiest for me. Therefore, the teak requirement is your call.

Assembly of Unit

1. The "X" piece is assembled to the Bottom Platform per the layout on Page (4). Ensure that the "X" is in the right location; either surface will do. Clamp. Use the drill press to open up the 1/8" pilot holes using a drill/countersink combo. Drill far enough to cover the screw with a teak plug. Install 5 #6 SS screws x 1". Cut teak plugs, install and sand smooth.
2. Assemble the rectangular holder on top of the Top Platform with clamps. Use the drill press to open up the 2 holes (on the center line) using the drill/countersink combo. Install 2 #6 SS screws x 1". Cut teak plugs, install and sand smooth.

Note. Both the "X" and the top holder can be epoxied in place

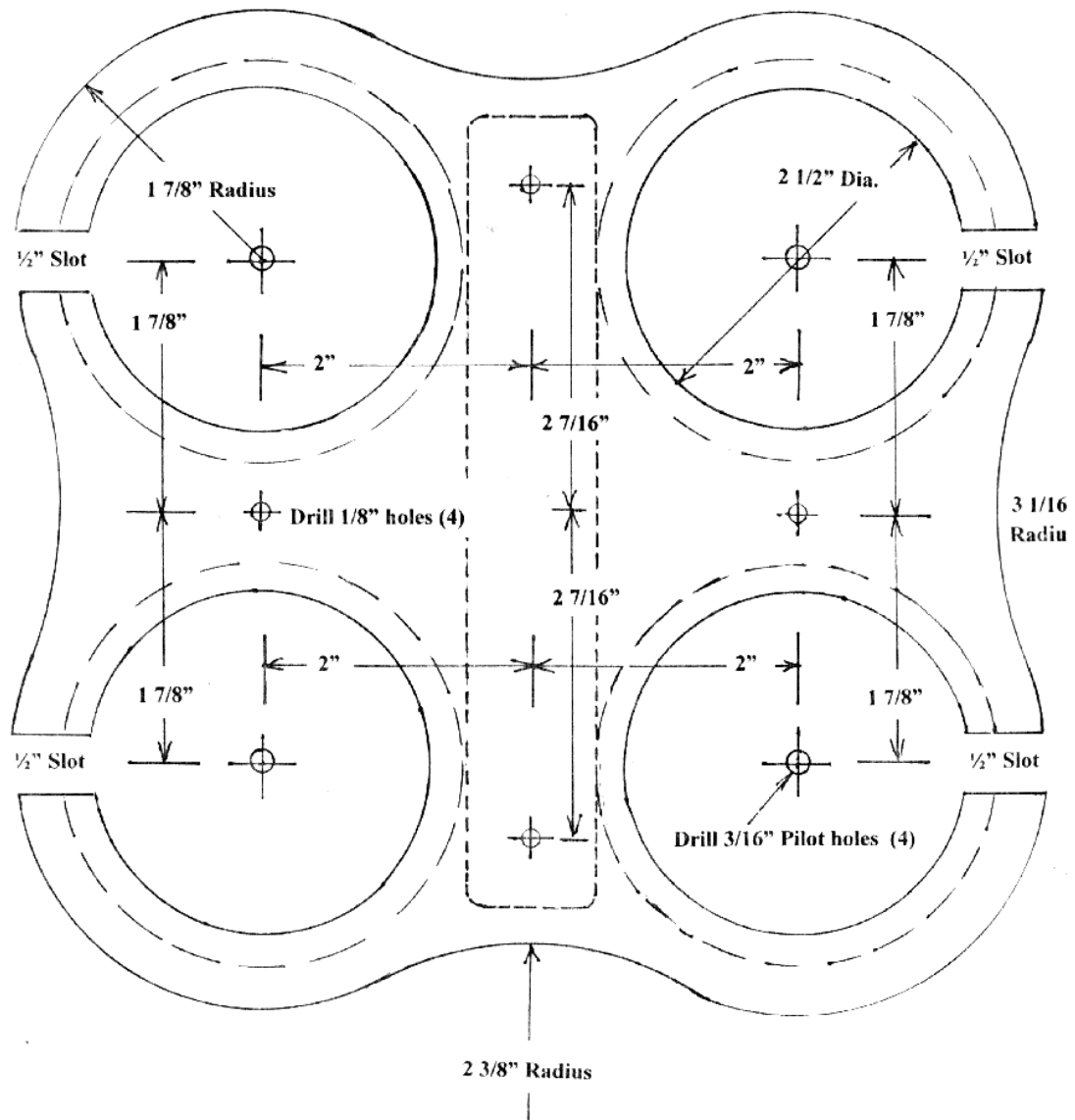
3. Mate the Top Platform on the 4" high "T" of the Bottom Platform and carefully align them. Countersink the 2 1/8" holes on either side that line up with the center of the rings. Install 2 #6 SS screws x 1"

Epoxy glue MUST NOT ooze on to any teak that is visible!

4. Apply several coats of teak oil to the unit, and **Your done!**
5. Our wine glasses are --- 6 1/2" High,
2 1/2" base diameter
3 1/2" stem
3" high goblet, less than 3" in dia.

C & C 30 Mk 1 I – Wine Glass Holder

Top Platform Layout



C & C 30 Mk 11 – Wine Glass Holder

Bottom Platform Layout

